

COMPACT DESIGN, **BIG PERFORMANCE**

GIANT[®]
BY TOBROCO

G1500 WHEEL LOADER



TYPES

G1500 | G1500 HD | G1500 X-TRA | G1500 X-TRA HD | G1500L X-TRA | G1500L X-TRA HD

Service weight: 1,480 - 1,525 kg | Engine power: 18,5 kW (25 hp)

STANDARD / HD / X-TRA / X-TRA HD / L X-TRA / L X-TRA HD



DISTINCTIVE POWER

These Tobroco-Giant compact wheel loaders offer high performance and versatility, combined with low operating costs and fuel consumption. The G1500 models feature individual wheel motors for stability, maneuverability and productivity.

The G1500 models are compactly designed with impressive performance. Tobroco-Giant has developed the G1500 models entirely in-house and only works with the best components from suppliers such as Kubota, Bosch Rexroth, Comer and Hydac.

TYPES	G1500	G1500 HD	G1500 X-TRA	G1500 X-TRA HD	G1500L X-TRA	G1500L X-TRA HD
Service weight ¹	1,480 kg	1,480 kg	1,525 kg	1,525 kg	1,525 kg	1,525 kg
Tipping load	1,140 kg	1,140 kg	1,210 kg	1,210 kg	1,485 kg	1,485 kg
Lifting height	2,560 mm	2,560 mm	2,070 mm	2,070 mm	2,070 mm	2,070 mm
Length without bucket	2,720 mm	2,720 mm	2,770 mm	2,770 mm	2,870 mm	2,870 mm
Width (with standard tyres)	890 mm	890 mm	1,100 mm	1,100 mm	1,100 mm	1,100 mm
Machine height	2,230 mm	2,230 mm	2,230 mm	2,230 mm	2,230 mm	2,230 mm

¹ Measured with earth bucket.

STRONG CHARACTERISTICS



- 1. WORKING COMFORTABLY** - A spacious and comfortable working environment.
- 2. WORK SAFELY** - The cabin and safety roof are ROPS/FOPS certified on international standard.
- 3. EASY SERVICE** - Maintenance on the G1500 is easy to perform because the maintenance points are easy to access.
- 4. POWERFUL PERFORMANCE** - A reliable 3-cylinder, Kubota engine without DOC and DPF ensures powerful performance.
- 5. COMPACT DESIGN** - The compact design of the G1500 makes it possible to work in tight spaces.
- 6. MANEUVERABILITY AND STABILITY** - The articulated pendulum system ensures maneuverability and stability.
- 7. PRODUCTIVITY** - Hydrostatic 4-wheel drive with automotive control and 4 heavy Poclain wheel engines.
- 8. HYDRAULIC POSSIBILITIES** - The standard version with double-acting function at the front (mechanically operated) can easily be expanded with additional hydraulic functions and a tandem pump.
- 9. SPEED** - 0-12 km/h (higher driving speed 0-19 km/h).
- 10. CHOOSE THE MACHINE FOR YOUR WORK** - Depending on the work, you can opt for a standard or (L) X-TRA variant with associated options.

TOP PERFORMANCE



"In particular, the powerful engine and higher lifting power are of great importance to us. Our machine park now consists of 6 Giants between 1,100 and 3,800 kg."

- Schuurman Wegenbouw BV



G1500 X-TRA



G1500

STRONG WORKING HYDRAULICS

The hydraulic system of the G1500 models is controlled directly via the joystick. With 42 L/min (170 bar) it is more than sufficient to drive a large number of attachments. If work demands it, the work hydraulics can be further expanded with additional double-acting functions and an electrically switchable tandem pump.

POWERFUL ENGINE

The G1500 is powered by a powerful 18,5 kW/25 hp diesel engine, without DOC and DPF, which meets the latest EU Stage V emission standards. To guarantee performance and comfort, Tobroco-Giant has equipped the machine with 4 heavy-duty wheel motors and an electrically switchable differential lock. This power train ensures maximum grip, a lot of pulling force and smooth movement in each situation while one benefits of reduced running costs and less fuel consumption.

**COMPACT
DESIGN**



G1500L X-TRA: MORE TIPPING LOAD, MORE STABILITY

The G1500L X-TRA is the latest addition to the G1500 series. With a wheelbase that is 10 centimeters longer than the G1500 X-TRA, this machine delivers over 20% more tipping load. The extended wheelbase also provides enhanced stability and improved driving comfort, especially when operating in an articulated position. All of this is achieved without any increase in weight.



"The wheel loader replaces manual labor that used to be done with a wheelbarrow. It relieves our employees from heavy physical work and increases our efficiency."

- Stefan Krebber, entrepreneur, gardener and landscape architect



G1500 X-TRA

STABILITY AND MANOEUVRABILITY

The articulated pendulum system gives the G1500 a lot of stability and manoeuvrability. The system ensures that all four wheels always remain on the ground, even when working on uneven terrain. This not only makes work safer, but also ensures sufficient traction at all times.

Despite their compact size and low operating weight, the G1500 models deliver outstanding performance. The standard model offers a lifting height of 2,56 meters, while the (L) X-TRA variants reach up to 2,07 meters. When it comes to tipping load, these machines truly show their strength: 1,140 kg for the standard model, 1,120 kg for the X-TRA variants, and an impressive 1,485 kg for the L X-TRA. Thanks to their narrow standard widths - 89 cm for the G1500 and 110 cm for the G1500 X-TRA and L X-TRA - these machines are ideal for working indoors, on narrow paths, or in areas with limited space.

While working with heavy loads the machine still holds an extraordinary stability against overturning. This is due to the four-wheel engines, which take the balance point of the machine to a very low level. For extra productivity it is possible to equip the machines with the patented Stabilo system or boom suspension. Both options provide extra safety and comfort, as uneven surfaces are absorbed without compromising performance.

SAFETY AND COMFORT



The machines are equipped with a safety roof as standard and can optionally be expanded to a full-option cabin. The G1500's spacious cab is easy to access and designed according to user's needs: The steering column is adjustable in depth and equipped with a dashboard where all necessary information can be easily found. The mechanically suspended seat is luxuriously designed and easy to adjust for good posture. While using the multifunction joystick, the operator can rest his arm on an ergonomically shaped armrest. Important buttons are within easy reach on and next to the joystick.



360° all-round visibility from the cabin

The G1500 machines have been thoroughly tested for safety by an independent institution and internationally certified for ROPS/FOPS protection. The operator's central position and the use of narrow stiles and a skylight provide 360-degree visibility all around and on the attachment. This ensures that work can be performed efficiently and accurately.



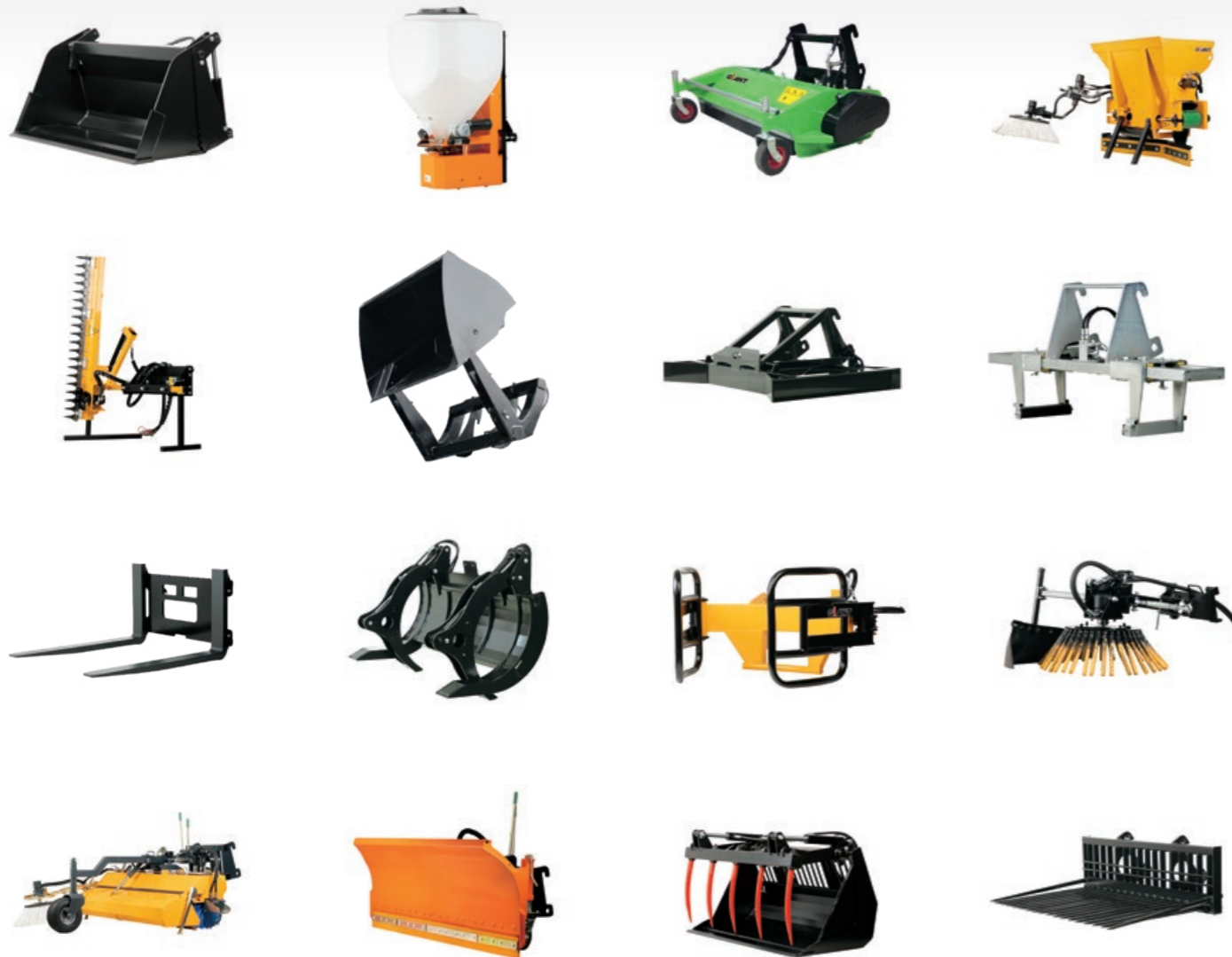
ELECTRONIC CONTROL

Information about engine temperature and other indicators can be checked via the dashboard so that the driver can always see these important data during work.

ATTACHMENTS

WIDE VARIETY WITH OVER 750 ATTACHMENTS

Our attachments are developed entirely in-house so that they deliver the best results when working on our machines. Tobroco-Giant offers more than 750 different attachments so your machine can be used all year long. By choosing the right attachment it is possible to adjust your Giant to working conditions for agricultural purposes, construction, material handling, private use and many other areas of application. Get every job done with just one machine!



HYDRAULIC QUICK COUPLER

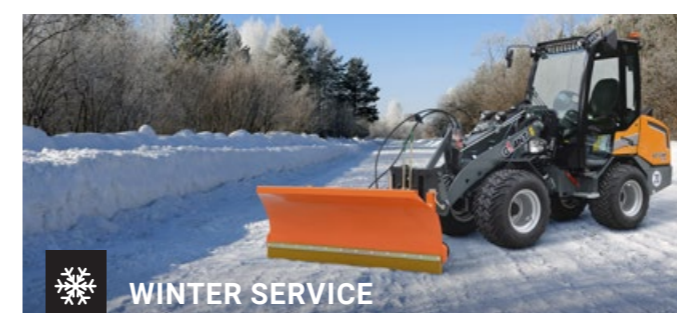
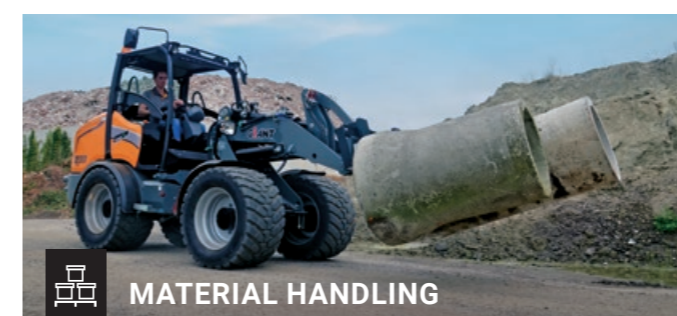
The G1500 models are equipped with a hydraulic quick coupler as a standard. This makes it possible to change attachments safely and within seconds.

MOUNTING SYSTEMS

Tobroco-Giant offers a wide range of mounting systems, enabling you to use the attachments that you already have.

SECTORS

ONE MACHINE FOR EVERY JOB



SPECIFICATIONS

TYPE	G1500	G1500 HD	G1500 X-TRA	G1500 X-TRA HD	G1500L X-TRA	G1500L X-TRA HD
Service weight ¹	1,480 kg	1,480 kg	1,525 kg	1,525 kg	1,525 kg	1,525 kg
Tipping load ²	1,140 kg	1,140 kg	1,210 kg	1,210 kg	1,485 kg	1,485 kg
DIMENSIONS AND SPEED						
Lifting height ²	2,560 mm	2,560 mm	2,070 mm	2,070 mm	2,070 mm	2,070 mm
Length without bucket	2,720 mm	2,720 mm	2,770 mm	2,770 mm	2,870 mm	2,870 mm
Machine height ³	2,230 mm	2,230 mm	2,230 mm	2,230 mm	2,230 mm	2,230 mm
Width on standard tyres	890 mm	890 mm	1,100 mm	1,100 mm	1,100 mm	1,100 mm
Standard tyres	7.00 x 12 AS	7.00 x 12 AS	26 x 12.00-12 AS	26 x 12.00-12 AS	26 x 12.00-12 AS	26 x 12.00-12 AS
Travel speed	0-12 km/h	0-12 km/h	0-12 km/h	0-12 km/h	0-12 km/h	0-12 km/h

ENGINE	Kubota D1105 (STAGE V)			Kubota D1105 (STAGE V)		
Cylinders	3	3	3	3	3	3
Engine power	25 hp / 18,5 kW	25 hp / 18,5 kW	25 hp / 18,5 kW	25 hp / 18,5 kW	25 hp / 18,5 kW	25 hp / 18,5 kW
Type	Diesel	Diesel	Diesel	Diesel	Diesel	Diesel
Fuel tank capacity	25 L	25 L	25 L	25 L	25 L	25 L
Oil capacity	41 L	41 L	41 L	41 L	41 L	41 L

POWERTRAIN	Hydrostatic four wheel drive		Hydrostatic four wheel drive		Hydrostatic four wheel drive	
Type	Automotive control		Automotive control		Automotive control	
Transmission	Electric controlled length differential lock		Electric controlled length differential lock		Electric controlled length differential lock	
Differential	4 heavy Poclain wheel engines		4 heavy Poclain wheel engines		4 heavy Poclain wheel engines	
Final drive	9,200 N	12,500 N	9,200 N	12,500 N	9,200 N	12,500 N
Pulling force	84 L/min (350 bar)		84 L/min (350 bar)		84 L/min (350 bar)	
Driving hydraulics	42 L/min (170 bar)		42 L/min (170 bar)		42 L/min (170 bar)	
Working hydraulics	Hydraulic multidisk brake (electric controlled)					
Parking brake	Hydraulic multidisk brake (electric controlled)					

STANDARD MACHINE FEATURES	G1500	G1500 HD	G1500 X-TRA	G1500 X-TRA HD	G1500L X-TRA	G1500L X-TRA HD
Giant hydraulic quick change system	Std	Std	Std	Std	Std	Std
ROPS/FOPS safety roof incl. safety doors left and right	Std	Std	Std	Std	Std	Std
Luxury seat incl. safety belt, armrest and extended backrest	Std	Std	Std	Std	Std	Std
1x double acting hydraulic function, mechanical	Std	Std	Std	Std	Std	Std
Floating position on lifting cylinder(s)	Std	Std	Std	Std	Std	Std
1x working light (halogen) front, on lifting arm	Std	Std	Std	Std	Std	Std
Main switch	Std	Std	Std	Std	Std	Std
Shunt coupling	Std	Std	Std	Std	Std	Std
Cyclone filter	Std	Std	Std	Std	Std	Std
Oil cooler	Std	Std	Std	Std	Std	Std

¹ Measured with earth bucket

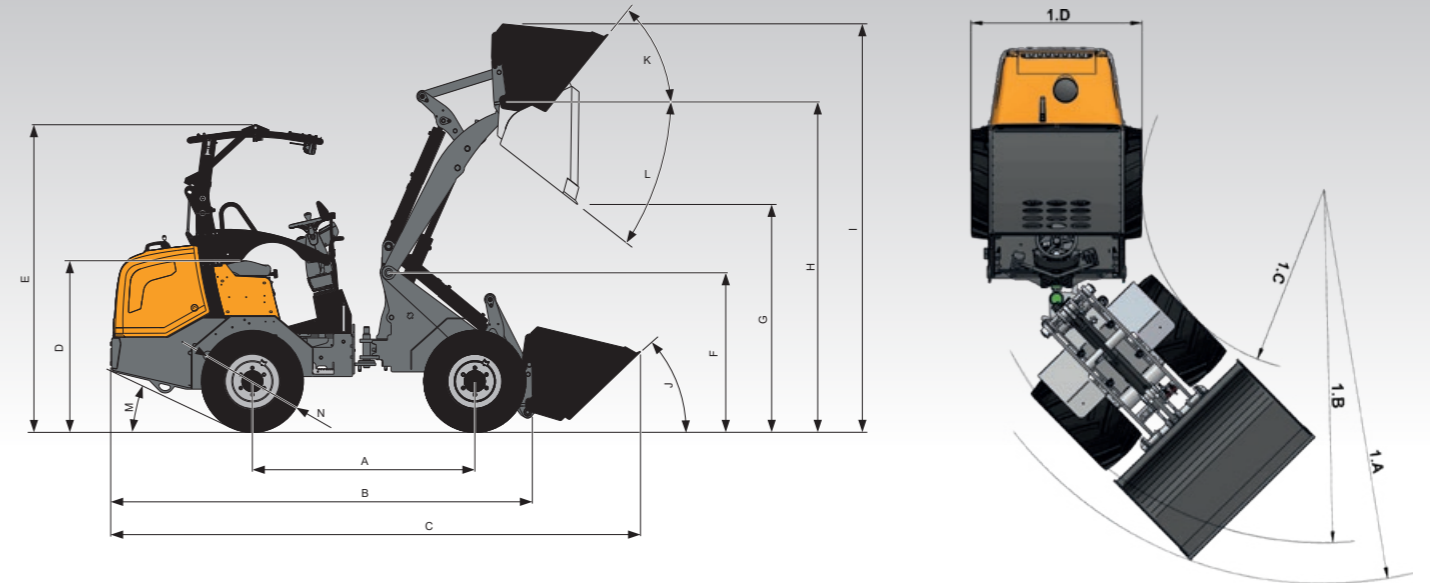
² Measured with hinge point in straight position on standard tyres

³ Measured on standard tyres with safety roof

Std: Standard

SPECIFICATIONS

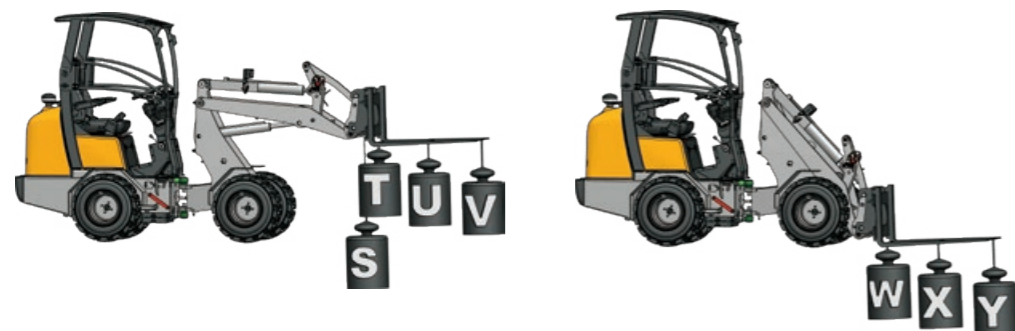
MEASUREMENTS	G1500	G1500 HD	G1500 X-TRA	G1500 X-TRA HD	G1500L X-TRA	G1500L X-TRA HD
A Wheelbase	1,370 mm	1,370 mm	1,420 mm	1,420 mm	1,520 mm	1,520 mm
B Total length (without bucket)	2,720 mm	2,720 mm	2,770 mm	2,770 mm	2,870 mm	2,870 mm
C Total length (with bucket)	3,500 mm	3,500 mm	3,520 mm	3,520 mm	3,620 mm	3,620 mm
D Seat height	1,140 mm	1,140 mm	1,140 mm	1,140 mm	1,140 mm	1,140 mm
E Max. height with safety roof	2,320 mm	2,320 mm	2,320 mm	2,320 mm	2,320 mm	2,320 mm
F Height front frame	1,550 mm	1,550 mm	1,150 mm	1,150 mm	1,150 mm	1,150 mm
G Max. dumping height	1,830 mm	1,830 mm	1,360 mm	1,360 mm	1,360 mm	1,360 mm
H Lifting height	2,560 mm	2,560 mm	2,070 mm	2,070 mm	2,070 mm	2,070 mm
I Height with bucket	3,140 mm	3,140 mm	2,640 mm	2,640 mm	2,640 mm	2,640 mm
J Rollback angle on the ground	41°	41°	44°	44°	44°	44°
K Rollback angle at max. lift height	52°	52°	55°	55°	55°	55°
L Max. angle for bucket emptying	44°	44°	41°	41°	41°	41°
M Drive-up angle	27°	27°	27°	27°	27°	27°
N Outer size of tyres	ø 750 mm	ø 750 mm	ø 750 mm	ø 750 mm	ø 750 mm	ø 750 mm
1A Turning radius with bucket	2,257 mm	2,257 mm	2,469 mm	2,469 mm	2,785 mm	2,785 mm
1B Turning radius on outer edge	1,900 mm	1,900 mm	2,263 mm	2,263 mm	2,495 mm	2,495 mm
1C Inner turning radius	1,040 mm	1,040 mm	1,163 mm	1,163 mm	1,270 mm	1,270 mm
1D Width on standard tyres	890 mm	890 mm	1,100 mm	1,100 mm	1,100 mm	1,100 mm



AVAILABLE OPTIONS

TYRES	G1500	G1500 HD	G1500 X-TRA	G1500 X-TRA HD	G1500L X-TRA	G1500L X-TRA HD
27x8.50-15 SKID (95 cm)	0	0	-	-	-	-
26x12.00-12 AS (110 cm)	0	0	-	-	-	-
26x12.00-12 SKID (110 cm)	0	0	0	0	0	0
26x12.00-12 GRASS (110 cm)	0	0	0	0	0	0
300/60x12 X-TRAC (110 cm)	0	0	0	0	0	0
26,5x14.00-12 GRASS (124 cm)	0	0	0	0	0	0
27x10.50-15 SKID (102 cm)	0	0	0	0	0	0
29x12.50-15 GRASS (117 cm)	0	0	0	0	0	0
31x15.50-15 AS (123 cm)	0	0	0	0	0	0
31x15.50-15 X-TRAC (123 cm)	0	0	0	0	0	0
31x15.50-15 SKID (123 cm)	0	0	0	0	0	0
400/50-R15 All Ground (126 cm)	0	0	0	0	0	0
Twin wheels: 7.00x12 AS (2 pieces)	0	0	-	-	-	-

TIPPING LOADS	G1500	G1500 HD	G1500 X-TRA	G1500 X-TRA HD	G1500L X-TRA	G1500L X-TRA HD
S	965 kg	965 kg	1,485 kg	1,485 kg	1,780 kg	1,780 kg
T	890 kg	890 kg	1,340 kg	1,340 kg	1,620 kg	1,620 kg
U	690 kg	690 kg	970 kg	970 kg	1,185 kg	1,185 kg
V	535 kg	535 kg	845 kg	845 kg	890 kg	890 kg
W	1,690 kg	1,690 kg	1,775 kg	1,775 kg	2,155 kg	2,155 kg
X	1,140 kg	1,140 kg	1,210 kg	1,210 kg	1,485 kg	1,485 kg
Y	800 kg	800 kg	855 kg	855 kg	1,055 kg	1,055 kg



Tipping load = without counterweights. Measured with Giant hitch. The above values may deviate for other types of hitches.



AVAILABLE OPTIONS

TYPE	G1500	G1500 HD	G1500 X-TRA	G1500 X-TRA HD	G1500L X-TRA	G1500L X-TRA HD
SAFETY ROOF/CABIN						
ROPS/FOPS foldable safety roof incl. safety doors (clearance height with folded safety roof: 1,845 mm)	0	0	0	0	0	0
ROPS/FOPS cabin incl. heating, radio and speakers, 2 side mirrors, 2 working lights (halogen) front and 2 rear	0	0	-	-	0	0
DAB+ radio and speakers (Bluetooth and USB 2.0 connection)	0	0	-	-	0	0
Cabin mat	0	0	-	-	0	0
Side mirrors (L+R)	0	0	0	0	0	0
HYDRAULIC CONNECTIONS ON LIFTING ARM						
Transport securing device	0	0	0	0	0	0
Hose rupture protection on lift and top cylinder (floating position not possible)	0	0	0	0	0	0
Hose rupture protection on lift and top cylinder + floating position + transport securing device	0	0	0	0	0	0
1x extra double acting hydraulic function, mechanical	0	0	0	0	0	0
1x extra double acting hydraulic function, electric/hydraulic in joystick	0	0	0	0	0	0
2x extra double acting hydraulic function, electric/hydraulic in joystick	0	0	0	0	0	0
Electrically switchable tandem pump, max. 33 L/min at 150 bar	0	0	0	0	0	0
Single- or double-side hydraulic hold on additional function	0	0	0	0	0	0
Leak oil connection	0	0	0	0	0	0
Free hydraulic return	0	0	0	0	0	0
HYDRAULIC CONNECTIONS AT THE BACK OF THE MACHINE						
1x extra double acting hydraulic function, mechanical	0	0	0	0	0	0
1x extra double acting hydraulic function, electric/hydraulic in joystick	0	0	0	0	0	0
Electrically switchable tandem pump, max. 33 L/min at 150 bar	0	0	0	0	0	0
Leak oil connection	0	0	0	0	0	0
Free hydraulic return	0	0	0	0	0	0
Three point lifting mechanism (Cat. 1)	0	0	0	0	0	0
ELECTRICAL/LIGHTING						
Switched 12-volt socket, 3-pin (max. 2)	0	0	0	0	0	0
13-pin trailer socket to the back	0	0	0	0	0	0
Additional working light (halogen or LED) front, on lifting arm (max. 2)	0	0	0	0	0	0
Additional working light (halogen or LED) to the front of safety roof (max. 2)	0	0	0	0	0	0
Additional working light (halogen or LED) behind the seat (max. 2)	0	0	0	0	0	0
Flashing/warning light (halogen or LED) mounted on safety roof (max. 2)	0	0	0	0	0	0
2x flashers (LED) front + 2x flashers (LED) rear	0	0	0	0	0	0
Traffic lights (halogen or LED)	0	0	0	0	0	0
License plate holder with illumination	0	0	0	0	0	0
OTHER OPTIONS						
Machine sprayed in RAL company colour(s)	0	0	0	0	0	0
Higher driving speed (0-19 km/h)	0	-	0	-	0	-
Four wheel drive differential lock	0	-	0	-	0	-
Hand throttle	0	0	0	0	0	0
Hand inching	0	0	0	0	0	0
Pro-inching	0	0	0	0	0	0
Stabilo system (patented)	0	0	0	0	0	0
Back-up alarm (acoustic)	0	0	0	0	0	0
Jump start	0	0	0	0	0	0
Mudguard wideners	0	0	0	0	0	0
Tow ball (in combination with counterweight at the back, 90 kg)	0	0	0	0	0	0
Combination towing hook (towing hook + tow ball)	0	0	0	0	0	0
Counterweight at the back (90 kg)	0	0	0	0	0	0
Counterweight 40 kg (max. 4 pcs) under chassis	0	0	0	0	0	0
Different hitch	0	0	0	0	0	0
Boom suspension	0	0	0	0	0	0
Parallel indicator on tilt cylinder	0	0	0	0	0	0
Engine heater (Coolant)	0	0	0	0	0	0
Document box	0	0	0	0	0	0
Panolin HLP Synth 46 biodegradable hydraulic oil	0	0	0	0	0	0
Road specification (ask your dealer for details)	0	0	0	0	0	0

MAINTENANCE & SERVICE

MAINTENANCE



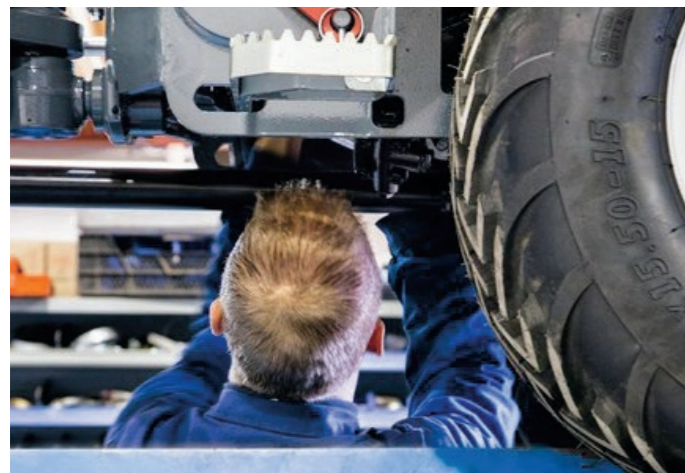
Performing maintenance to the G1500 is no problem at all because the service points are easy to reach. Filters, hydraulic system and engine can be freely accessed via the easy-to-open bonnet, tilting cab or other service panels. This ensures that daily checks and maintenance can be carried out quickly and in a safe manner.

GENUINE GIANT PARTS



The usage of genuine Giant parts ensures reliable, efficient and safe operation of your machine. We only use the best quality components and test them severely before we introduce a new model. All these parts are vital for the best possible performance and minimising downtime. Keeping your Giant 100% original saves money for the owner because of reduced maintenance costs and results in a higher resale value once the machine is resold.

SERVICE & SUPPORT



At Tobroco-Giant we offer support, service and high quality parts to protect the investment that you have made in Giant machinery. Together with our dealers we are available to make sure that your machine performs in the best possible way. This increases your productivity and will result in an even better return on your investment.

TRAINING CENTER



At Tobroco-Giant we know all the details about our machines. That is why we offer an extensive training program to our dealers. Not only on the newest features or attachments, but also on how to service a machine to the highest standards.

**THE COMPANY:
ENGINEERING, PRODUCTION
AND SERVICE UNDER ONE ROOF**

**DEVELOPED IN EUROPE,
BUILT FOR THE WORLD**

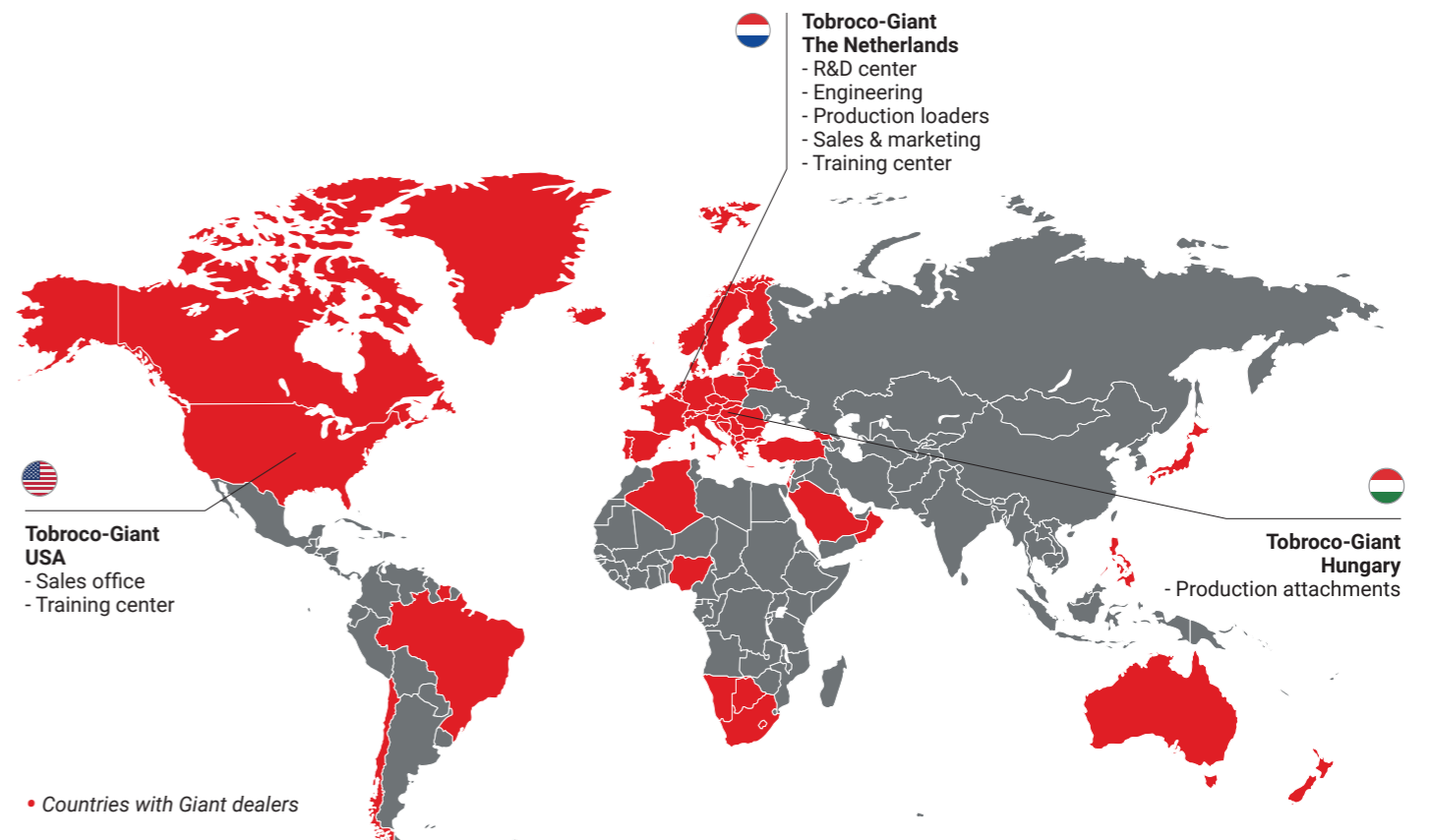
Tobroco-Giant designs and manufactures machines in Europe with a global focus. Founded in 1996 by Toine and Caroline Brock in the Netherlands, the company has grown into an international player in the field of compact wheel loaders, telescopic loaders, telehandlers, skid steers, attachments and compaction machines.

Our mission is to develop smart solutions that enable customers in construction, agriculture, landscaping and various other sectors to work more easily and efficiently. More than 600 employees in the Netherlands, Hungary and the United States contribute to this ambition every day.

**INNOVATION, CRAFTSMANSHIP AND
CUSTOMER SATISFACTION**

From its R&D department and modern production facilities in the Netherlands and Hungary, Tobroco-Giant develops products in-house. The company works with high-quality components from renowned partners such as Jungheinrich, Kubota, Bosch Rexroth and Honda.

Even after delivery, Tobroco-Giant continues to put the customer first. Through a global dealer network, an in-house service department and an extensive spare parts center, support is provided wherever needed. Customer-specific requirements and challenges are taken seriously and translated into tailored solutions.



ALL MODELS

Tobroco-Giant has been the manufacturer of Giant machines and attachments since 1996 when we opened our first factory in the Netherlands. Today, Tobroco-Giant offers one of the broadest portfolios in the industry with more than 40 models in more than 80 countries. In addition to machines with engines ranging from 20 hp to 76 hp, Tobroco-Giant also supplies electric machines and a complete line of compaction machines. Tobroco-Giant is growing into a full-liner in compact and sustainable equipment.



GS800G
GS800
GS900

GS900E
GS850T
GS950T
GS950TE



G1100 (TELE)
G1200 (TELE)



G1500 (X-TRA) (HD)
G1500L X-TRA (HD)



G2200E (X-TRA / TELE)



G2300 (HD)
G2300 X-TRA (HD)



G2500 (X-TRA) HD



G2700 (X-TRA / TELE) HD (+)
G2700E (X-TRA / TELE) (HD)



G3500 (X-TRA / TELE)



G5000 (X-TRA / TELE)



GT5048



750+

ATTACHMENTS



VIBRATORY PLATES
E-VIBRATORY PLATES

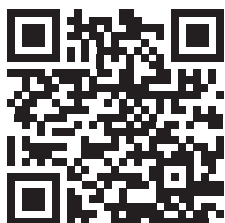


VIBRATORY RAMMERS
E-VIBRATORY RAMMERS



REVERSIBLE VIBRATORY PLATES
E-REVERSIBLE VIBRATORY PLATES

Electric



GIANT[®]
BY TOBROCO

Tobroco-Giant

Sprendlingenstraat 57, 5061 KM Oisterwijk (The Netherlands)

Tel.: +31 (0)13-5211212 | Fax: +31 (0)13-5234045

Website: www.tobroco-giant.com | E-mail: info@tobroco.nl

www.instagram.com/tobrocogiant www.facebook.com/tobrocogiant

www.linkedin.com/company/tobroco-machines www.youtube.com/tobrocogiant



All technical data in this brochure refer to under Central European operating conditions tested series models and describe the standard functions. Specifications and their modes of operation, as well as accessories, depend on the model and the options of the product, as well as country-specific regulations in the country of sale. Images may show non-listed or non-standard available products. The descriptions, illustrations, weights and technical data are not binding and are in accordance with the state of the art at the time of going to press. Changes in the design, equipment, optics and technology are due to the continuous development of its products without prior notice. Do you need special functions which are only available through the use of additional components and / or under special circumstances, please contact us! We will be happy to answer your questions and let you know whether and under what conditions regarding the product and the environmental conditions special functions are realizable. When doubts about the capacity or the performance of our products under special circumstances, we recommend to perform under controlled conditions. Testing activities despite the utmost care, we cannot rule out deviations from illustrations or dimensions, calculation errors, misprints or omissions in this brochure. We therefore accept no liability for the correctness and completeness of the information contained in this brochure. As part of our General Terms and Conditions, we guarantee the proper functioning of our products. Furthermore Linear guarantees we provide in principle. A further liability than outlined in our Terms and Conditions is excluded.

Article number:
P00131500ENV126